

Aderans

# SENTOO

COLLECTION

PREMIUM  
BY SENTOO

LOTUS  
BY SENTOO

CREATIVE  
BY SENTOO

COVER IMAGE: CREATIVE | TITANIA



NEW

LOTUS | FUCHSIA



PREMIUM | AYA



NEW

LOTUS | DAISY



LOTUS | HAZEL

PREMIUM | KINU

# SENTOO

COLLECTION



Enjoy the newest edition of the Sentoo Collection: an exclusive selection of wig ranges. Crafted for today's client by top designers, Sentoo wigs are unique in their superior finish and design. The Sentoo Collection is unlike any other, encompassing different ranges to ensure the needs of every customer are met.

THE ADERANS TEAM



PREMIUM | SAKURA LONG

**HAIR STYLES** 4  
FROM SHORT TO LONG

**PREMIUM** 6

**LOTUS** 24

**CREATIVE** 42

**HAIR CARE** 52

**STYLE OVERVIEW**  
SIZE & CAP CONSTRUCTION  
HAIR LENGTH  
COLOUR OVERVIEW

**PREMIUM** 54

**LOTUS** 58

**CREATIVE** 62

**COLOURS** 63



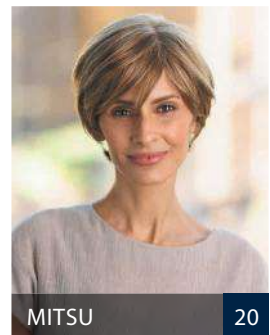
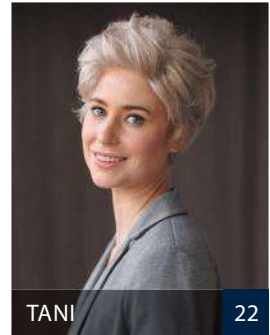
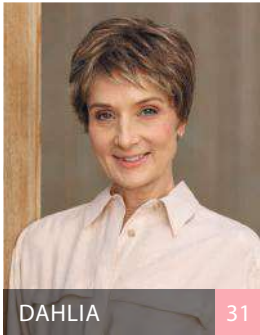
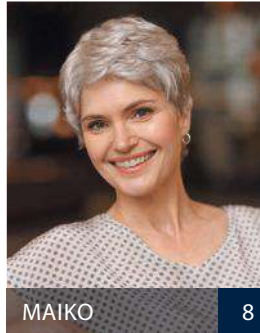
# SENTOO

## COLLECTION

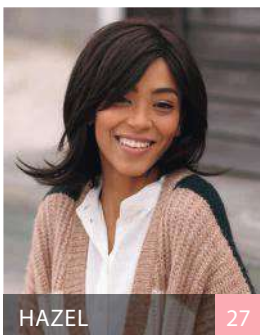
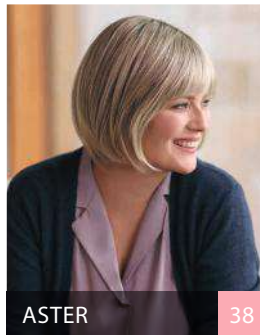
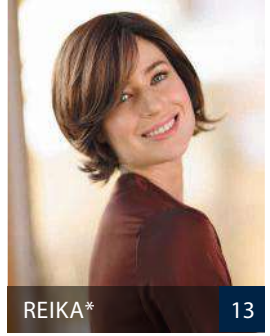
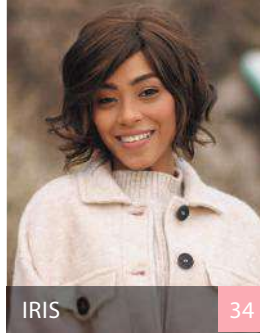
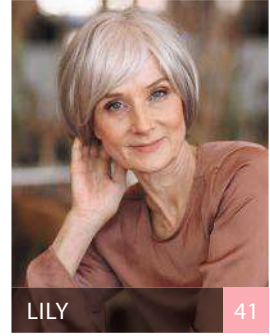
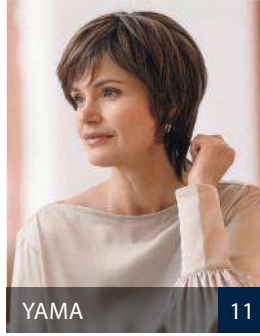
 PREMIUM

 LOTUS

 CREATIVE



HAIR STYLES – FROM SHORT TO LONG HAIR





PREMIUM | KINU & SAKURA LONG





Easy to wear  
Comfortable Base  
Hand-tied  
Monofilament  
Invisible Lace Front



PREMIUM | SANGO & AYA

# PREMIUM

BY SENTOO

Premium is a range of beautifully crafted synthetic fibre wigs. Our designers created the Sentoo Premium Collection with one aim in mind: producing a product that enables wearers of any age to feel comfortable all day long. The Premium range is perfect for those wishing for a natural look with easy to wear comfort and a base suited to those with a sensitive scalp.



# MAIKO

S M L



SIZE: 53-54 cm | FRONT: 6 cm  
CROWN: 6 cm | NAPE: 6 cm

## COLOURS

### BLONDES:

S770, 223, 18/22R, 20/22, 713, 769

### BROWNS:

2/4, 8/10-10G, 768\*

### REDS:

740N, 767\*, S731\*

### GREYS:

60, 600, 56/60, 56,  
38, 49, 436

## S & L

Available in S (51cm)  
L (55cm) caps.

### COLOURS - S:

S770, 18/22R, 769, S12/10,  
60, 56/60, 56, 49

### COLOURS - L:

18/22R, S12/10, 56/60

COLOUR: 56/60





# KINU



S M L

SIZE: 53-54 cm | FRONT: 14 cm  
CROWN: 15 cm | NAPE: 4 cm

## COLOURS

BLONDES: S770, A757G, A791G  
BROWNS: 4/6, S637  
GREYS: 60, 600, 49, 436, 135\*, S456\*

COLOUR: S637



# TAMAKI



S M L

SIZE: 53-54 cm | FRONT: 10.5 cm  
CROWN: 18 cm | NAPE: 6 cm

## COLOURS

BLONDES: S770, 134, 18/22R, 20/22, 713, A757G  
BROWNS: S12/10, A761G  
GREYS: 60, 600, 56/60

COLOUR: 2/4



# YAMA



S M L

SIZE: 53-54 cm | FRONT: 10 cm  
CROWN: 13 cm | NAPE: 10 cm

## COLOURS

### BLONDES:

S770, 18/22R, 713, 769, A791G\*

### BROWNS:

2/4\*, 8/10-20G

### REDS:

829, 767\*

### GREYS:

60, 600, 56/60, 38, S456\*, 49\*



COLOUR: 12/10



# AYA

S M L



SIZE: 53-54 cm | FRONT: 6.5 cm  
CROWN: 5 cm | NAPE: 5 cm

## COLOURS

- BLONDES:  
S770, 713, 223, 18/22R, 769
- BROWNS:  
S12/10, 4/6\*
- REDS:  
740N, 131
- GREYS:  
60, 600, 56/60, 56, 38, 49,  
135\*, 436\*



COLOUR: 769

# REIKA\*



S M L



SIZE: 53-54 cm | FRONT: 15 cm  
CROWN: 20 cm | NAPE: 10 cm

## COLOURS

BLONDES: S770, 769, A757G, A812G  
BROWNS: 2/4, 8, 8/10-20G, 728T, 768,  
A761G | REDS: S731, 767, 740N | GREYS:  
56, 56/60, 49, S456, 135



COLOUR: 761G



# EMI\*



S M L

SIZE: 53-54 cm | FRONT: 11 cm  
CROWN: 12 cm | NAPE: 8 cm

## COLOURS

BROWNS: 8, S12/10, 8/10-20G, 728T, 768,  
A761G | REDS: S731, 131, 740N, 767, 829,  
S637 | GREYS: 135, 436, S456



COLOUR: 56



# KYU

S M L



SIZE: 53-54 cm | FRONT: 10 cm  
CROWN: 10 cm | NAPE: 5 cm

## COLOURS

### BLONDES:

S770, 223, 769, 20/22, 713,  
A791G, 134, 18/22R

### BROWNS:

4/6, 8 728T, S12/10

### REDS:

131

### GREYS:

60, 600, 56/60, 56, 38, 132,  
49, 436, S456

## S & L

Available in S (51cm)  
L (55cm) caps.

COLOURS - S:  
S770, 18/22R, S12/10, 60,  
600, 56/60

COLOURS - L:  
18/22R, 56/60

COLOUR: 12/10







# TOWA\*



S M L

SIZE: 53-54 cm | FRONT: 10.5 cm  
CROWN: 12.5 cm | NAPE: 7 cm

## COLOURS

BLONDES: 769 | BROWNS: 2/4, 8, S12/10, 8/10-20G  
REDS: S731, 133, 767, S637, 131 | GREYS: 436, 135

COLOUR: 38





# SANGO



S M L

SIZE: 53-54 cm | FRONT: 10 cm  
CROWN: 33 cm | NAPE: 17 cm

## COLOURS

BLONDES: S770, 223, 769, 20/22, 713, A791G, 134, 18/22R, A757G  
BROWNS: 4/6, 8/10-20G, S12/10, A761G  
REDS: 740N, S637



COLOUR: 812G



# AKARI



S M L

SIZE: 53-54 cm | FRONT: 10 cm  
CROWN: 7-9 cm | NAPE: 6 cm

## COLOURS

BLONDES: S770, 713, A791G, 134, 18/22R, 223, 769  
BROWNS: 4/6R, 728T | REDS: 740N, S637, 731\*  
GREYS: 60, 56, 49, 600, 38, 56/60, 132



COLOUR: 791G



# SAKURA LONG



S M L

SIZE: 53-54 cm | FRONT: 21 cm

CROWN: 45 cm | NAPE: 45 cm

## COLOURS

### BLONDES:

S770, 223, A791G, 20/22,  
769, A757G

### BROWNS:

2/4, 8, 8/10-20G, 4/6, S12/10

### REDS:

740N, S637



COLOUR: 769



# KASUMI



S M L

SIZE: 53-54 cm | FRONT: 11.5 cm  
CROWN: 9.5 cm | NAPE: 6.5 cm

## COLOURS

BLONDES: S770, 134\*, 18/22R, 223, 769  
BROWNS: 2/4, 8/10-20G, 768\*, S12/10,  
A761G | REDS: 131, 740N\*, S637\*  
GREYS: 60, 600, 56/60, 49, 56, 135



COLOUR: 60

# MITSU



S M L

SIZE: 53-54 cm | FRONT: 11 cm  
CROWN: 13 cm | NAPE: 7 cm

## COLOURS

BLONDES: 713, 769, 18/22R  
BROWNS: 8, 728T, 2/4\* | REDS: 133, 767,  
740N, 829 | GREYS: 60, 600, 56/60, 135, 49



COLOUR: 769





# SORA



S M L

SIZE: 53-54 cm | FRONT: 7.5 cm  
CROWN: 19 cm | NAPE: 7 cm

## COLOURS

### BLONDES:

S770, 223, 769, 20/22, 713, A791G,  
134, 18/22R, A757G

### BROWNS:

4/6, 8, S12/10, A761G

### REDS:

740N, S637

### GREYS:

56/60

## S & L

Available in S (51cm)  
L (55cm) caps.

### COLOURS - S:

S770, 713, 8, S12/10,  
S637, 56/60

### COLOURS - L:

713, 8, S637



COLOUR: S770



# TANI



S M L

SIZE: 53-54 cm | FRONT: 9.5 cm  
CROWN: 9.5 cm | NAPE: 6 cm

## COLOURS

BLONDES: S770, 713, A757G, 223, 18/22R, 134\*, 769  
BROWNS: 8/10-20G, 4/6\*, S12/10\* | REDS: S731\*, 131\*, S637\*, 829, 767\*  
GREYS: 60, 600, 56/60, 56, 38, 132, 49, 436, S456, 135\*

COLOUR: 600





# MYU



S M L

SIZE: 53-54 cm | FRONT: 19 cm  
CROWN: 23 cm | NAPE: 19 cm

## COLOURS

### BLONDES:

S770, 18/22R, 223

### BROWNS:

2/4, 4/6, 728T, S12/10

### REDS:

S637, 131

### GREYS:

49



COLOUR: 4/6



LOTUS | PRIMROSE & IRIS



Beautiful Styles

Natural Look

Natural Colours

Extreme Comfort

Monofilament Bases

LOTUS | FUCHSIA & DAISY

**LOTUS**  
BY SENTOO

The Lotus Collection is an expertly crafted range of wigs providing the best possible fit and comfort, while never sacrificing on style. Offering a lace front and differing cap constructions in mono, hand tied, or wefted, the collection caters to everybody. Produced out of passion, our highly skilled team had only one aim in mind; stylish, comfortable and natural-looking wigs to suit all ages.



# Gardenia



S M L

SIZE: 54 cm | FRONT: 14 cm  
CROWN: 16 cm | NAPE: 3 cm

### COLOURS:

Walnut Melange, Lotus Iced Melange, **NEW** Aspen Melange Rooted,  
**NEW** Birch Long Rooted, **NEW** Purple Heart Rooted



COLOUR: Aspen Melange Rooted





# Hazel



S M L

SIZE: 53 cm | FRONT: 13 cm  
CROWN: 25 cm | NAPE: 15 cm

## COLOURS:

- Red Chestnut Rooted
- Sycamore Melange Rooted
- Zebra Wood Rooted
- Lotus Silver
- Lotus Iced Melange
- Lotus Midnight
- Cherry Rooted
- Sandalwood Rooted
- Cherry Melange
- Maple Melange
- Smokey Melange
- Walnut Melange
- Sandalwood Melange
- Oak Melange Rooted
- Light Oak Melange Rooted

COLOUR: Lotus Midnight





# Bluebell

S M L



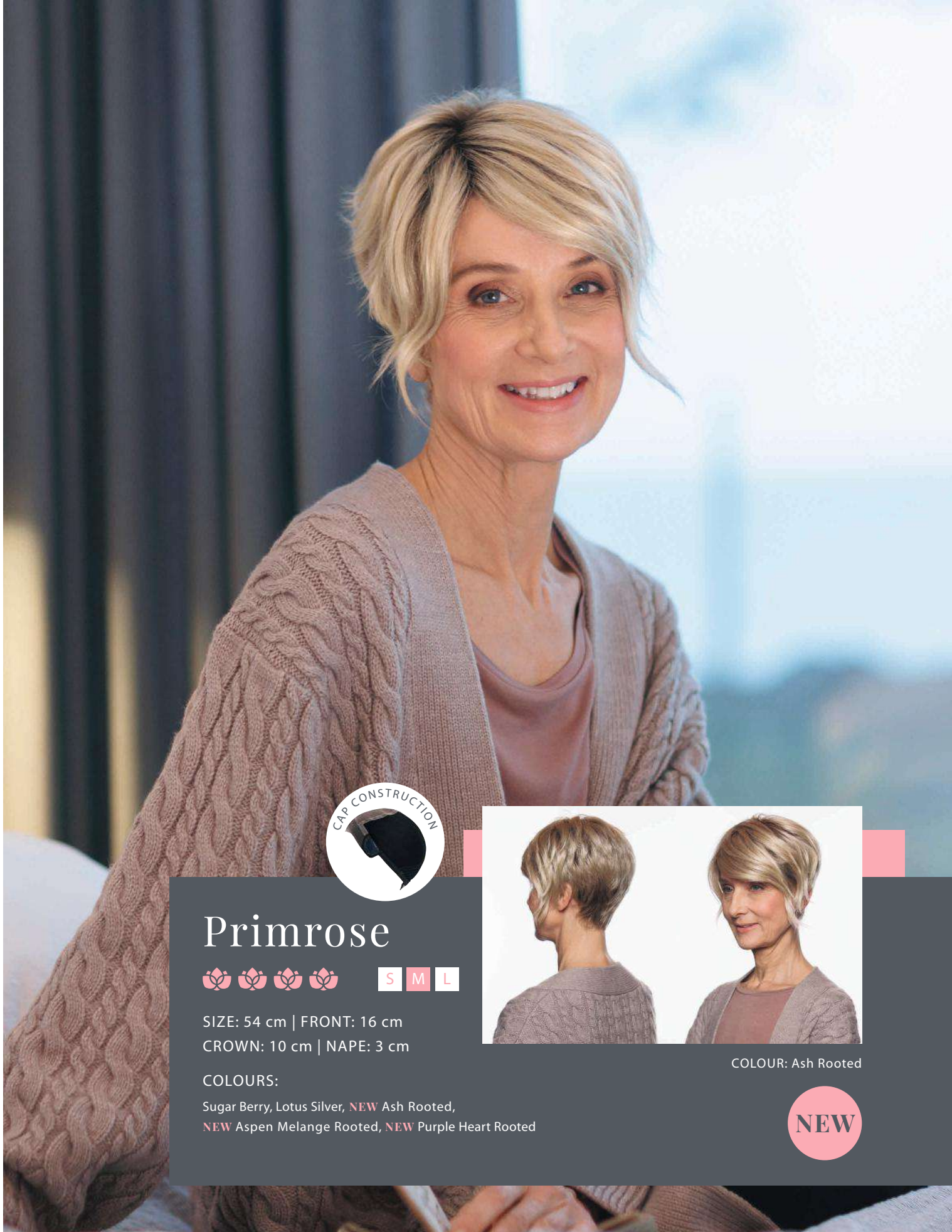
SIZE: 53 cm | FRONT: 38 cm  
CROWN: 48 cm | NAPE: 33 cm

## COLOURS:

- Red Chestnut Rooted
- Sycamore Melange Rooted
- Zebra Wood Rooted
- Lotus Midnight
- Cherry Rooted
- Sandalwood Rooted
- Cherry Melange
- Maple Melange
- Walnut Melange
- Sandalwood Melange
- Oak Melange Rooted
- Light Oak Melange Rooted
- Birch Long Rooted **NEW**
- Purple Heart Rooted **NEW**



COLOUR: Sycamore Melange Rooted



# Primrose



S M L

SIZE: 54 cm | FRONT: 16 cm  
CROWN: 10 cm | NAPE: 3 cm

### COLOURS:

Sugar Berry, Lotus Silver, **NEW** Ash Rooted,  
**NEW** Aspen Melange Rooted, **NEW** Purple Heart Rooted

COLOUR: Ash Rooted





# Fuchsia



S M L

SIZE: 54 cm | FRONT: 30 cm  
CROWN: 24 cm | NAPE: 9 cm

## COLOURS:

Oak Melange Rooted, Walnut Melange, **NEW** Sugar Berry,  
**NEW** Aspen Melange Rooted, **NEW** Birch Long Rooted



COLOUR: Birch Long Rooted







# Dahlia



S M L

SIZE: 54 cm | FRONT: 8 cm  
CROWN: 10 cm | NAPE: 5 cm

## COLOURS:

- Red Chestnut Rooted
- Sycamore Melange Rooted
- Zebra Wood Rooted
- Lotus Silver
- Lotus Iced Melange
- Lotus Midnight
- Cherry Rooted
- Sandalwood Rooted
- Cherry Melange
- Maple Melange
- Smokey Melange
- Walnut Melange
- Sandalwood Melange
- Light Oak Melange Rooted
- Oak Melange Rooted
- Aspen Melange Rooted **NEW**

COLOUR: Sandalwood Melange





# Blossom

S M L

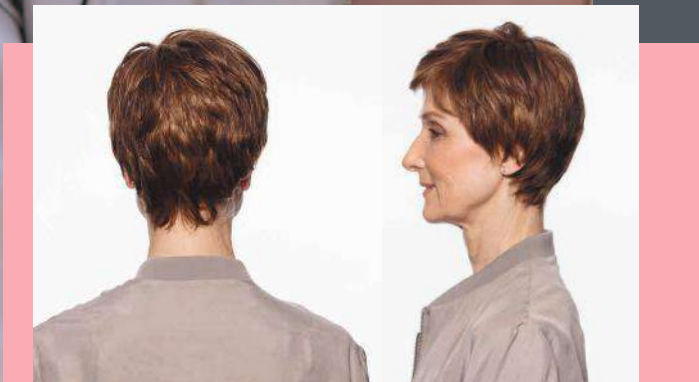


SIZE: 55 cm | FRONT: 5 cm  
CROWN: 10 cm | NAPE: 5 cm

### COLOURS:

- Red Chestnut Rooted
- Sycamore Melange Rooted
- Zebra Wood Rooted
- Lotus Silver
- Lotus Iced Melange
- Lotus Midnight
- Cherry Rooted
- Sandalwood Rooted
- Cherry Melange
- Maple Melange
- Smokey Melange
- Walnut Melange
- Sandalwood Melange Oak
- Melange Rooted Light Oak
- Melange Rooted
- Ash Rooted **NEW**

COLOUR: Cherry Melange





# Tulip



S M L

SIZE: 53 cm | FRONT: 9 cm  
CROWN: 12.5 cm | NAPE: 8 cm

## COLOURS:

Red Chestnut Rooted, Sycamore Melange Rooted, Zebra Wood Rooted, Lotus Silver, Lotus Iced Melange, Lotus Midnight, Cherry Rooted, Sandalwood Rooted, Cherry Melange, Maple Melange, Smokey Melange, Walnut Melange, Sandalwood Melange, Oak Melange Rooted, Light Oak Melange Rooted, Ash Rooted **NEW**



COLOUR: Sandalwood Rooted





# Iris



S M L

SIZE: 53 cm | FRONT: 20 cm  
CROWN: 22 cm | NAPE: 6.5 cm

## COLOURS:

- Red Chestnut Rooted
- Sycamore Melange Rooted
- Zebra Wood Rooted
- Sugar Berry
- Lotus Iced Melange
- Lotus Midnight
- Cherry Rooted
- Sandalwood Rooted
- Cherry Melange
- Maple Melange
- Walnut Melange
- Sandalwood Melange
- Oak Melange Rooted
- Light Oak Melange Rooted



COLOUR: Walnut Melange



# Jasmine

S M L



SIZE: 51.5 cm | FRONT: 13 cm  
CROWN: 22 cm | NAPE: 6 cm

## COLOURS:

- Red Chestnut Rooted
- Sycamore Melange Rooted
- Zebra Wood Rooted
- Sugar Berry
- Lotus Silver
- Lotus Iced Melange
- Lotus Midnight
- Cherry Rooted
- Sandalwood Rooted
- Cherry Melange
- Maple Melange
- Smokey Melange
- Walnut Melange
- Sandalwood Melange
- Oak Melange Rooted
- Light Oak Melange Rooted
- Aspen Melange Rooted **NEW**

COLOUR: Lotus Silver





# Daisy



S M L

SIZE: 54 cm | FRONT: 6.5 cm  
CROWN: 6 cm | NAPE: 3 cm

## COLOURS:

- Lotus Silver
- Maple Melange
- NEW** Ash Rooted
- NEW** Aspen Melange Rooted
- NEW** Purple Heart Rooted
- NEW** Willow Rooted



COLOUR: Willow Rooted



# Aster

S M L



SIZE: 53 cm | FRONT: 10 cm  
CROWN: 26 cm | NAPE: 10 cm

## COLOURS:

- Red Chestnut Rooted
- Sycamore Melange Rooted
- Zebra Wood Rooted
- Lotus Silver
- Lotus Iced Melange
- Lotus Midnight
- Cherry Rooted Sandalwood
- Rooted Cherry Melange
- Maple Melange
- Smokey Melange
- Walnut Melange
- Sandalwood Melange
- Oak Melange Rooted
- Light Oak Melange Rooted
- Birch Long Rooted **NEW**
- Aspen Melange Rooted **NEW**



COLOUR: Light Oak Melange Rooted





# Peony



S M L

SIZE: 53 cm | FRONT: 11 cm  
CROWN: 7 cm | NAPE: 5 cm

**COLOURS:**

Red Chestnut Rooted, Sycamore Melange Rooted, Zebra Wood Rooted, Lotus Silver, Lotus Iced Melange, Lotus Midnight, Cherry Rooted, Sandalwood Rooted, Cherry Melange, Maple Melange, Smokey Melange, Walnut Melange, Sandalwood Melange, Oak Melange Rooted, Light Oak Melange Rooted

COLOUR: Walnut Melange



# Poppy

S M L



SIZE: 53 cm | FRONT: 32 cm  
CROWN: 36 cm | NAPE: 36 cm

## COLOURS:

- Red Chestnut Rooted
- Sycamore Melange Rooted
- Zebra Wood Rooted
- Sugar Berry
- Lotus Midnight
- Cherry Rooted
- Sandalwood Rooted
- Cherry Melange
- Maple Melange
- Walnut Melange
- Sandalwood Melange
- Oak Melange Rooted
- Light Oak Melange Rooted
- Birch Long Rooted **NEW**
- Aspen Melange Rooted **NEW**



COLOUR: Light Oak Melange Rooted



# Lily



S M L

SIZE: 53 cm | FRONT: 13 cm  
CROWN: 17 cm | NAPE: 10 cm

## COLOURS:

- Red Chestnut Rooted
- Sycamore Melange Rooted
- Zebra Wood Rooted
- Lotus Silver
- Lotus Iced Melange
- Lotus Midnight
- Cherry Rooted
- Sandalwood Rooted
- Cherry Melange
- Maple Melange
- Smokey Melange
- Walnut Melange
- Sandalwood Melange
- Oak Melange Rooted
- Light Oak Melange Rooted
- Birch Long Rooted **NEW**
- Aspen Melange Rooted **NEW**

COLOUR: Iced Melange





CREATIVE VIOLA & TITANIA

## Our Creative Symbol



VHair-Mix is a unique mix of fibres from Aderans. The main component is VHair, combined with a heat-resistant flexi fibre.

LEARN MORE ABOUT THE FIBRE – PAGE 62



- Unique Collection
- Unique Fibres
- High-Heat Fibres
- Various Hair Styles
- Creative Possibilities



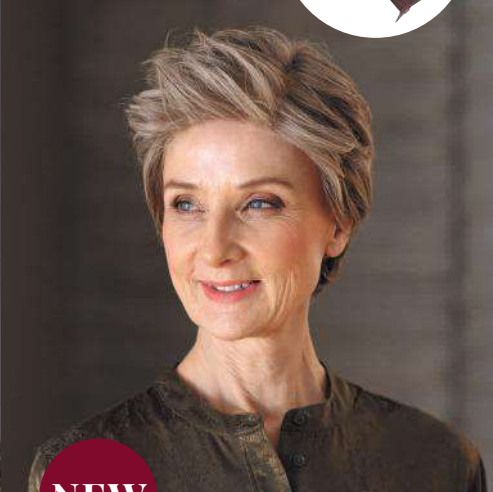
**CREATIVE**  
BY SENTOO  
**COMING  
SOON**

CREATIVE | PHEBE

# CREATIVE

BY SENTOO

Creative is a prestige range of unique products made from the innovative V-Hair, Cyber Hair and other high-heat fibres. In the Creative Collection you will find a contemporary selection of styles, that lend themselves perfectly to both cutting and styling. Creative is crafted with the customer in mind, providing the freedom of a fully stylable fibre that is both natural in appearance and allows the wearer to achieve their desired look with ease. With a Creative wig, only your imagination sets the limits to your styling.



**NEW**

# OCTAVIA

S M L



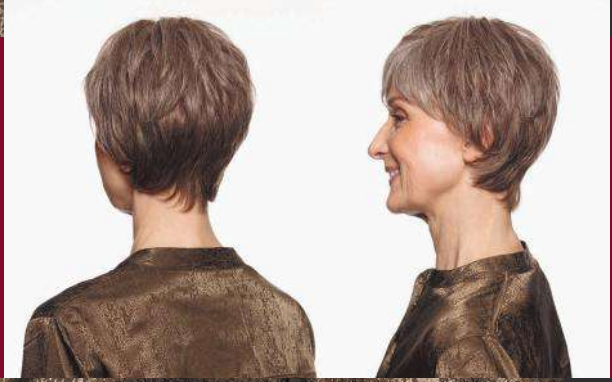
SIZE: 54 cm | FRONT: 8 cm  
CROWN: 8 cm | NAPE: 6 cm

### COLOURS:

- Midnight Melange
- Walnut Melange
- Smokey Melange
- Iced Melange
- Zebra Wood Soft Rooted
- Maple Melange Soft Rooted
- Oak Melange Soft Rooted
- Beechwood Soft Rooted
- Honey Maple Soft Rooted
- Heartwood Soft Rooted

COLOUR: Smokey Melange

**CREATIVE**  
BY SENTOO  
**COMING SOON**



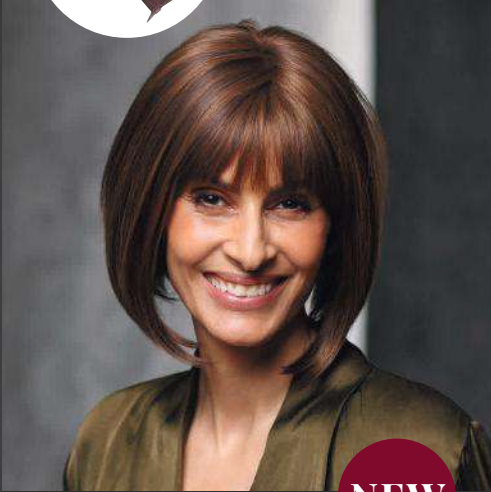


CREATIVE | OCTAVIA



CREATIVE | PHEBE





NEW

# PHEBE



S M L



SIZE: 54 cm | FRONT: 9 cm  
CROWN: 17 cm | NAPE: 6 cm

### COLOURS:

- Midnight Melange
- Walnut Melange
- Smokey Melange
- Iced Melange
- Zebra Wood Soft Rooted
- Maple Melange Soft Rooted
- Oak Melange Soft Rooted
- Beechwood Soft Rooted
- Honey Maple Soft Rooted
- Heartwood Soft Rooted

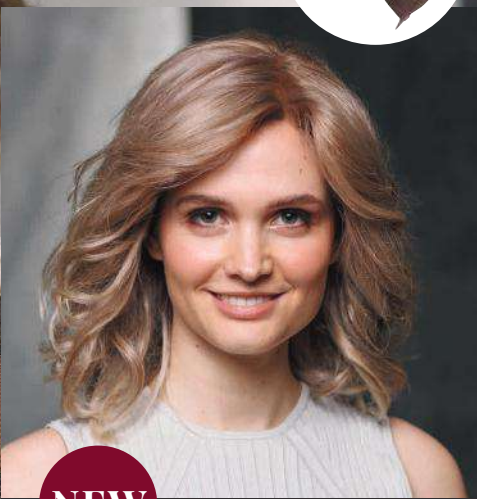
COLOUR: Walnut Melange



CREATIVE  
BY SENTOO  
COMING  
SOON



**CREATIVE**  
BY SENTOO  
**COMING  
SOON**



**NEW**

**VIOLA**

S M L



SIZE: 54 cm | FRONT: 14 cm  
CROWN: 32 cm | NAPE: 11.5 cm

**COLOURS:**

- Midnight Melange
- Walnut Melange
- Smokey Melange
- Iced Melange
- Zebra Wood Soft Rooted
- Maple Melange Soft Rooted
- Oak Melange Soft Rooted
- Beechwood Soft Rooted
- Honey Maple Soft Rooted
- Heartwood Soft Rooted



COLOUR: Heartwood Soft Rooted



CREATIVE | VIOLA



CREATIVE | TITANIA



**NEW**

# TITANIA



**S M L**



SIZE: 54 cm | FRONT: 18 cm  
CROWN: 45 cm | NAPE: 34 cm

### COLOURS:

- Midnight Melange
- Walnut Melange
- Smokey Melange
- Iced Melange
- Zebra Wood Soft Rooted
- Maple Melange Soft Rooted
- Oak Melange Soft Rooted
- Beechwood Soft Rooted
- Honey Maple Soft Rooted
- Heartwood Soft Rooted

COLOUR: Midnight Melange



**CREATIVE**  
by SENTOO  
**COMING  
SOON**



**SYNTHETIC FIBRE**

If worn daily, we recommend you follow the steps below every 7-10 days.

**STEP 1: DETANGLING - GENTLY BRUSH**

Using a wire wig brush, gently brush to remove all knots and tangles before washing.

**STEP 2: RINSE & SHAMPOO**

For shorter styles: Fill a basin or large bowl with LUKEWARM water and mix in a small amount of T-Range shampoo until it has dissolved. Submerge your wig or hairpiece into the basin or large bowl and leave to soak for a couple of minutes.

For longer styles, use running water, and ensure the water flows in the same direction as the hair to avoid tangling and damage. Next, lather your T-Range shampoo between your hands before gently applying the solution to the root area of your piece. Gently rinse away all product residue. Repeat if desired.

**STEP 3: CONDITION**

Using your fingers smooth a small amount of T-Range Softening conditioner through midlengths and ends, avoiding the base altogether. Gently brush through conditioner from midlengths to ends, whilst securely holding the base to avoid damage. Rinse thoroughly.

**STEP 4: WRAP**

Wrap piece in a towel, dabbing softly to remove excess moisture.

**STEP 5: BRUSH**

Supporting the base, gently brush your hairpiece or wig from midlength to end. Once brushed, place on a polyhead or wig stand.

**STEP 6: DRY**

At this stage, whilst it is damp, apply a light spray of the T-Range Soften 'N' Sheen and leave to air-dry naturally.

**STEP 7: SHAKE & GO**

Once dry, gently shake or brush your wig or hairpiece into the desired style. Once happy, for additional hold you may wish to apply some of the T-Range Holding Spray.

For all other styling purposes we recommend Redken's Styling range.

**Advice:**

It is not recommended that you sleep in a fibre wig or hairpiece as this can result in friction frizz and a shorter life span.

We would expect a well-maintained fibre item to last around 4-6 months, however some longer length styles may last only 2-3.

Please keep in mind that these time frames are based upon everyday wear and that it is normal for your piece to shed during that time, excess shedding can be due to poor upkeep.

Speak to your Aderans stylist about how best to get the most out of your item.



**Fibre Shampoo**

A gentle cleaning shampoo specially formulated for fibre hair.



**Fibre Softening Conditioner**

An intensive conditioner and revitalising treatment, leaving the hair soft and moisturised.



**Fibre Soft 'n' Sheen**

Leave in conditioner and protection spray.



**Fibre Holding Spray**

Fixing water-based spray for hold without build up.



**CREATIVE**

**VHAIR-MIX**

**STEP 1: CLEANSING - REVITALISING SHAMPOO**

Softly comb your wig to remove any tangles. Pour a small amount of REVITALISING SHAMPOO into a basin of lukewarm water and stir. Submerge the piece and leave to soak for 3-5 minutes, allowing cleansing treatment to freshen the hair. Gently swish your hair in the water and rinse gently.

**STEP 2: CONDITIONING – DETANGLE CREAM**

After rinsing, dilute a small amount of DETANGLE CREAM into a basin of lukewarm water. Once again, submerge the wig and allow to soak for 3-5 minutes in the treatment to condition the hair. Gently swish the wig in the solution. Rinse.

**STEP 3: SOAKING**

Immerse your wig into a basin of 40°C hot water and leave to soak for 20 minutes, this step is very important to replenish the moisture.

**STEP 4: DRYING**

Wrap the wig in a dry towel and gently pat dry. Take care NOT to massage or rub.

**STEP 5: DAILY PROTECTION – MOISTURE PROTECTION SPRAY**

Before brushing your wig, apply MOISTURE PROTECTION SPRAY on the damp hair. Hold the bottle approximately 8 inches from the hair and apply a fine mist.

**STEP 6: BRUSHING**

Always spray your wig with Moisture Protection Spray before and after brushing.

**STEP 7: STYLING**

You can use a hairdryer on a low heat to dry your hair system. Take care NOT to dry the wig completely as it will remove too much of the required moisture. After brushing and styling, repeat STEP 5.

We recommend only sleeping with satin or silk pillowcases, as this will reduce friction.

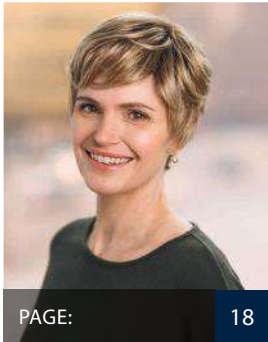
It is advisable to following the above procedures every 3 – 4 days to replenish the moisture content of the wig.

# PREMIUM

BY SENTOO



Monofilament top, hand-tied and wefted, PU-tabs and a delicate lace front to frame the face and create an invisible hairline.



PAGE: 18

## AKARI

SIZE: 53-54 cm | FRONT: 10 cm  
CROWN: 7-9 cm | NAPE: 6 cm

### COLOURS

BLONDES: S770, 713, **A791G**, 134, 18/22R, 223, 769  
| BROWNS: 4/6R, 728T | REDS: 740N, S637, 731\* |  
GREYS: 60, 56, 49, 600, 38, 56/60, 132



PAGE: 12

## AYA

SIZE: 53-54 cm | FRONT: 6.5 cm  
CROWN: 5 cm | NAPE: 5 cm

### COLOURS

BLONDES: S770, 713, 223, 18/22R, **769** | BROWNS:  
S12/10, 4/6\* | REDS: 740N, 131 | GREYS: 60, 600,  
56/60, 56, 38, 49, 135\*, 436\*



PAGE: 13

## EMI\*

SIZE: 53-54 cm | FRONT: 11 cm  
CROWN: 12 cm | NAPE: 8 cm

### COLOURS

BROWNS: 8, S12/10, 8/10-20G, 728T, 768, A761G |  
REDS: S731, 131, 740N, 767, 829, S637 | GREYS: 135,  
436, S456



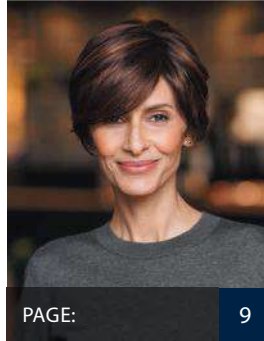
PAGE: 20

## KASUMI

SIZE: 53-54 cm | FRONT: 11.5 cm  
CROWN: 9.5 cm | NAPE: 6.5 cm

### COLOURS

BLONDES: S770, 134\*, 18/22R, 223, 769 | BROWNS:  
2/4, 8/10-20G, 768\*, S12/10, A761G | REDS: 131,  
740N\*, S637\* | GREYS: **60**, 600, 56/60, 49, 56, 135



PAGE: 9

## KINU

SIZE: 53-54 cm | FRONT: 14 cm  
CROWN: 15 cm | NAPE: 4 cm

### COLOURS

BLONDES: S770, A757G, A791G | BROWNS: 4/6,  
**S637** | GREYS: 60, 600, 49, 436, 135\*, S456\*



PAGE: 14

## KYU

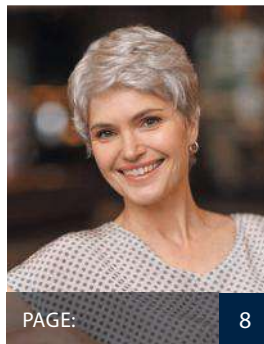
SIZE: 53-54 cm | FRONT: 10 cm  
CROWN: 10 cm | NAPE: 5 cm

### COLOURS

BLONDES: S770, 223, 769, 20/22, 713, A791G, 134,  
18/22R | BROWNS: 4/6, 8 728T, **S12/10** | REDS: 131 |  
GREYS: 60, 600, 56/60, 56, 38, 132, 49, 436, S456

### S & L:

S (51 cm) COLOURS: S770, 18/22R, S12/10, 60, 600,  
56/60 | L (55 cm) COLOURS: 18/22R, 56/60



PAGE: 8

## MAIKO

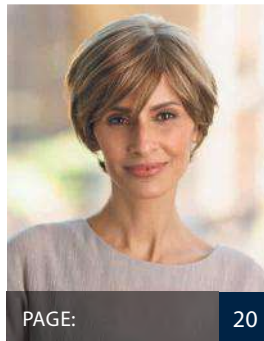
SIZE: 53-54 cm | FRONT: 6 cm  
CROWN: 6 cm | NAPE: 6 cm

### COLOURS

BLONDES: S770, 223, 18/22R, 20/22, 713, 769 |  
BROWNS: 2/4, 8/10-10G, 768\* | REDS: 740N, 767\*,  
S731\* | GREYS: 60, 600, **56/60**, 56, 38, 49, 436

### S & L:

S (51 cm) COLOURS: S770, 18/22R, 769, S12/10, 60,  
56/60, 56, 49 | L (55 cm) COLOURS: 18/22R, S12/10,  
56/60



PAGE: 20

## MITSU

SIZE: 53-54 cm | FRONT: 11 cm  
CROWN: 13 cm | NAPE: 7 cm

### COLOURS

BLONDES: 713, **769**, 18/22R | BROWNS: 8, 728T,  
2/4\* | REDS: 133, 767, 740N, 829 | GREYS: 60, 600,  
56/60, 135, 49





**MYU** S M L ◆◆◆

SIZE: 53-54 cm | FRONT: 19 cm  
CROWN: 23 cm | NAPE: 19 cm

COLOURS

BLONDES: S770, 18/22R, 223 | BROWNS: 2/4, 4/6, 728T, S12/10 | REDS: S637, 131 | GREYS: 49

PAGE: 23



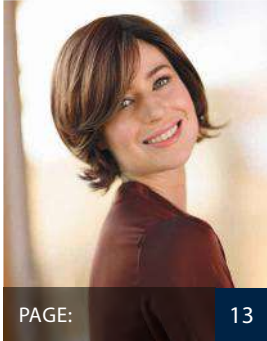
**TAMAKI** S M L ◆◆◆

SIZE: 53-54 cm | FRONT: 10.5 cm  
CROWN: 18 cm | NAPE: 6 cm

COLOURS

BLONDES: S770, 134, 18/22R, 20/22, 713, A757G | BROWNS: S12/10, A761G | GREYS: 60, 600, 56/60

PAGE: 10



**REIKA\*** S M L ◆◆◆

SIZE: 53-54 cm | FRONT: 15 cm  
CROWN: 20 cm | NAPE: 10 cm

COLOURS

BLONDES: S770, 769, A757G, A812G | BROWNS: 2/4, 8, 8/10-20G, 728T, 768, A761G | REDS: S731, 767, 740N | GREYS: 56, 56/60, 49, S456, 135

PAGE: 13



**TANI** S M L ◆◆◆

SIZE: 53-54 cm | FRONT: 9.5 cm  
CROWN: 9.5 cm | NAPE: 6 cm

COLOURS

BLONDES: S770, 713, A757G, 223, 18/22R, 134\*, 769 | BROWNS: 8/10-20G, 4/6\*, S12/10\* | REDS: S731\*, 131\*, S637\*, 829, 767\* | GREYS: 60, 600, 56/60, 56, 38, 132, 49, 436, S456, 135\*

PAGE: 22



**SAKURA LONG** S M L ◆◆◆

SIZE: 53-54 cm | FRONT: 21 cm  
CROWN: 45 cm | NAPE: 45 cm

COLOURS

BLONDES: S770, 223, A791G, 20/22, 769, A757G | BROWNS: 2/4, 8, 8/10-20G, 4/6, S12/10 | REDS: 740N, S637

PAGE: 19



**TOWA\*** S M L ◆◆◆

SIZE: 53-54 cm | FRONT: 10.5 cm  
CROWN: 12.5 cm | NAPE: 7 cm

COLOURS

BLONDES: 769 | BROWNS: 2/4, 8, S12/10, 8/10-20G | REDS: S731, 133, 767, S637, 131 | GREYS: 436, 135

PAGE: 15



**SANGO** S M L ◆◆◆

SIZE: 53-54 cm | FRONT: 10 cm  
CROWN: 33 cm | NAPE: 17 cm

COLOURS

BLONDES: S770, 223, 769, 20/22, 713, A791G, 134, 18/22R, A757G | BROWNS: 4/6, 8/10-20G, S12/10, A761G | REDS: 740N, S637

PAGE: 16



**YAMA** S M L ◆◆◆

SIZE: 53-54 cm | FRONT: 10 cm  
CROWN: 13 cm | NAPE: 10 cm

COLOURS

BLONDES: S770, 18/22R, 713, 769, A791G\* | BROWNS: 2/4\*, 8/10-20G | REDS: 829, 767\* | GREYS: 60, 600, 56/60, 38, S456\*, 49\*

PAGE: 11



**SORA** S M L ◆◆◆

SIZE: 53-54 cm | FRONT: 7.5 cm  
CROWN: 19 cm | NAPE: 7 cm

COLOURS

BLONDES: S770, 223, 769, 20/22, 713, A791G, 134, 18/22R, A757G | BROWNS: 4/6, 8, S12/10, A761G | REDS: 740N, S637 | GREYS: 56/60

S & L:

S (51 cm) COLOURS: S770, 713, 8, S12/10, S637, 56/60 | L (55 cm) COLOURS: 713, 8, S637

PAGE: 21



# PREMIUM

BY SENTOO

COLOUR ▶ STYLE ▼	BLONDES										BROWNS							
	5770	20/22	134	223	713	18/22R	769	A791G	A757G	A812G	2/4	4/6	8	512/10	8/10-20G	728T	768	A761G
AKARI	•		•	•	•	•	•	•				•						
AYA	•			•	•	•	•					*	•					
EMI*													*	*	*	*	*	*
KASUMI	•		*	•		•	•				•		•	•			*	•
KINU	•							•	•			•						
KYU	•	•	•	•	•	•	•	•				•	•		•			
KYU - S   L	•S					•S,L							•S					
MAIKO		•		•	•	•	•				•			•			*	
MAIKO - S   L	•S					•S,L	•S						•S,L					
MITSU					•	•	•				*		•		•			
MYU	•			•	•						•	•		•		•		
REIKA*	*						*		*	*	*		*	*	*	*	*	*
SAKURA LONG	•	•		•			•	•	•		•	•	•	•				
SANGO	•	•	•	•	•	•	•	•	•			•	•	•				•
SORA	•	•	•	•	•	•	•	•	•			•	•					•
SORA - S   L	•S				•S,L							•S,L	•S					
TAMAKI	•	•	•		•	•			•				•					•
TANI	•		*	•	•	•	•		•			*	*	•				
TOWA							*				*		*	*				
YAMA	•				•	•	•	*			*			•				

PREMIUM – COLOUR OVERVIEW

COLOUR ▶ STYLE ▼	REDS							GREYS									
	5731	133	767	740N	829	5637	131	60	600	56/60	56	38	132	49	436	5456	135
AKARI	*			•		•		•	•	•	•	•	•	•			
AYA				•			•	•	•	•	•	•		•	*		*
EMI*	*		*	*	*	*	*								*	*	*
KASUMI				*		*	•	•	•	•				•			•
KINU							•	•						•	•	*	*
KYU								•	•	•	•	•	•	•	•	•	
KYU - S   L								•S	•S	•S,L							
MAIKO	*		*	•				•	•	•	•	•		•	•		
MAIKO - S   L								•S		•S,L	•S			•S			
MITSU		•	•	•	•			•	•	•				•			•
MYU							•							•			
REIKA*	*		*	*						*	*			*		*	*
SAKURA LONG				•		•											
SANGO				•		•											
SORA				•		•				•							
SORA - S   L										•S							
TAMAKI								•	•	•							
TANI	*		*		•	*	*	•	•	•	•	•	•	•	•	•	*
TOWA	*	*	*			*	*								*		*
YAMA			*		•			•	•	•		•		*		*	

# LOTUS

BY SENTOO



Machine wefting on a stretch net with a monofilament top & lace front.



## LILY

Machine wefting on a stretch net with a monofilament top & lace front.



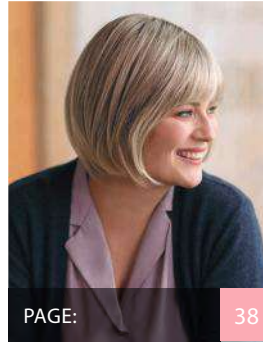
Machine wefting on a stretch net, a hand tied top that feels delicate and soft on the scalp with anti-slip tabs & a lace front.



Nape machine wefting covered by a soft-touch fabric, a hand-tied base on a stretch net with a monofilament top, lace front and PU tabs for extra comfort and support.



Nape machine wefting covered by a soft-touch fabric, with a hand-tied, finer-seamed base, on a lighter-weight stretch net; a Monofilament Top, extended lace front and PU tabs for extra comfort and support.



PAGE: 38

## Aster



SIZE: 53 cm | FRONT: 10 cm  
CROWN: 26 cm | NAPE: 10 cm



### COLOURS:

Red Chestnut Rooted, Sycamore Melange Rooted, Zebra Wood Rooted, Lotus Silver, Lotus Iced Melange, Lotus Midnight, Cherry Rooted, Sandalwood Rooted, Cherry Melange, Maple Melange, Smokey Melange, Walnut Melange, Sandalwood Melange, Oak Melange Rooted, Light Oak Melange Rooted, Birch Long Rooted **NEW**, Aspen Melange Rooted **NEW**.



PAGE: 32

## Blossom



SIZE: 55 cm | FRONT: 5 cm  
CROWN: 10 cm | NAPE: 5 cm



### COLOURS:

Red Chestnut Rooted, Sycamore Melange Rooted, Zebra Wood Rooted, Lotus Silver, Lotus Iced Melange, Lotus Midnight, Cherry Rooted, Sandalwood Rooted, **Cherry Melange**, Maple Melange, Smokey Melange, Walnut Melange, Sandalwood Melange, Oak Melange Rooted, Light Oak Melange Rooted, Ash Rooted **NEW**.



PAGE: 28

## Bluebell

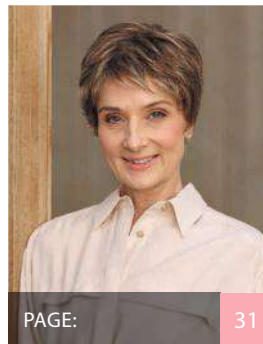


SIZE: 53 cm | FRONT: 38 cm  
CROWN: 48 cm | NAPE: 33 cm



### COLOURS:

Red Chestnut Rooted, **Sycamore Melange Rooted**, Zebra Wood Rooted, Lotus Midnight, Cherry Rooted, Sandalwood Rooted, Cherry Melange, Maple Melange, Walnut Melange, Sandalwood Melange, Oak Melange Rooted, Light Oak Melange Rooted, Birch Long Rooted **NEW**, Purple Heart Rooted **NEW**.



PAGE: 31

## Dahlia



SIZE: 54 cm | FRONT: 8 cm  
CROWN: 10 cm | NAPE: 5 cm



### COLOURS:

Red Chestnut Rooted, Sycamore Melange Rooted, Zebra Wood Rooted, Lotus Silver, Lotus Iced Melange, Lotus Midnight, Cherry Rooted, Sandalwood Rooted, Cherry Melange, Maple Melange, Smokey Melange, Walnut Melange, **Sandalwood Melange**, Light Oak Melange Rooted, Oak Melange Rooted, Aspen Melange Rooted **NEW**.



PAGE: 37

## Daisy



SIZE: 54 cm | FRONT: 6.5 cm  
CROWN: 6 cm | NAPE: 3 cm



### COLOURS:

Lotus Silver, Maple Melange, **NEW** Ash Rooted, **NEW** Aspen Melange Rooted, **NEW** Purple Heart Rooted, **NEW** Willow Rooted.





## Fuchsia



SIZE: 54 cm | FRONT: 30 cm  
CROWN: 24 cm | NAPE: 9 cm



### COLOURS:

Oak Melange Rooted, Walnut Melange, **NEW** Sugar Berry, **NEW** Aspen Melange Rooted, **NEW** Birch Long Rooted.



PAGE: 30



## Gardenia



SIZE: 54 cm | FRONT: 14 cm  
CROWN: 16 cm | NAPE: 3 cm



### COLOURS:

Walnut Melange, Lotus Iced Melange, **NEW** Aspen Melange Rooted, **NEW** Birch Long Rooted, **NEW** Purple Heart Rooted.



PAGE: 26



## Hazel



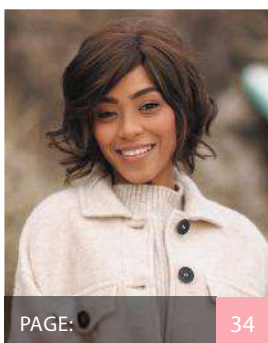
SIZE: 53 cm | FRONT: 13 cm  
CROWN: 25 cm | NAPE: 15 cm



### COLOURS:

Red Chestnut Rooted, Sycamore Melange Rooted, Zebra Wood Rooted, Lotus Silver, Lotus Iced Melange, **Lotus Midnight**, Cherry Rooted, Sandalwood Rooted, Cherry Melange, Maple Melange, Smokey Melange, Walnut Melange, Sandalwood Melange, Oak Melange Rooted, Light Oak Melange Rooted.

PAGE: 27



## Iris



SIZE: 53 cm | FRONT: 20 cm  
CROWN: 22 cm | NAPE: 6.5 cm



### COLOURS:

Red Chestnut Rooted, Sycamore Melange Rooted, Zebra Wood Rooted, Sugar Berry, Lotus Iced Melange, Lotus Midnight, Cherry Rooted, Sandalwood Rooted, Cherry Melange, Maple Melange, **Walnut Melange**, Sandalwood Melange, Oak Melange Rooted, Light Oak Melange Rooted.

PAGE: 34



## Jasmine



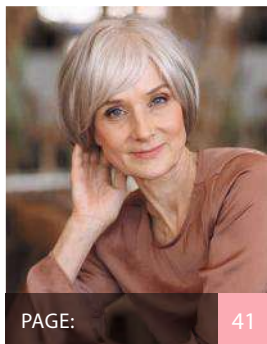
SIZE: 51.5 cm | FRONT: 13 cm  
CROWN: 22 cm | NAPE: 6 cm



### COLOURS:

Red Chestnut Rooted, Sycamore Melange Rooted, Zebra Wood Rooted, Sugar Berry, **Lotus Silver**, Lotus Iced Melange, Lotus Midnight, Cherry Rooted, Sandalwood Rooted, Cherry Melange, Maple Melange, Smokey Melange, Walnut Melange, Sandalwood Melange, Oak Melange Rooted, Light Oak Melange Rooted, Aspen Melange Rooted **NEW**.

PAGE: 36



## Lily



SIZE: 53 cm | FRONT: 13 cm  
CROWN: 17 cm | NAPE: 10 cm



### COLOURS:

Red Chestnut Rooted, Sycamore Melange Rooted, Zebra Wood Rooted, Lotus Silver, **Lotus Iced Melange**, Lotus Midnight, Cherry Rooted, Sandalwood Rooted, Cherry Melange, Maple Melange, Smokey Melange, Walnut Melange, Sandalwood Melange, Oak Melange Rooted, Light Oak Melange Rooted, Birch Long Rooted **NEW**, Aspen Melange Rooted **NEW**.

PAGE: 41



## Peony



SIZE: 53 cm | FRONT: 11 cm  
CROWN: 7 cm | NAPE: 5 cm



### COLOURS:

Red Chestnut Rooted, Sycamore Melange Rooted, Zebra Wood Rooted, Lotus Silver, Lotus Iced Melange, Lotus Midnight, Cherry Rooted, Sandalwood Rooted, Cherry Melange, Maple Melange, Smokey Melange, **Walnut Melange**, Sandalwood Melange, Oak Melange Rooted, Light Oak Melange Rooted.

PAGE: 39



## Poppy



SIZE: 53 cm | FRONT: 32 cm  
CROWN: 36 cm | NAPE: 36 cm



### COLOURS:

Red Chestnut Rooted, Sycamore Melange Rooted, Zebra Wood Rooted, Sugar Berry, Lotus Midnight, Cherry Rooted, Sandalwood Rooted, Cherry Melange, Maple Melange, Walnut Melange, Sandalwood Melange, Oak Melange Rooted, Birch Long Rooted **NEW**, Aspen Melange Rooted **NEW**, Light Oak Melange Rooted.

PAGE: 40



## Primrose



SIZE: 54 cm | FRONT: 16 cm  
CROWN: 10 cm | NAPE: 3 cm



### COLOURS:

Sugar Berry, Lotus Silver, **NEW** Ash Rooted, **NEW** Aspen Melange Rooted, **NEW** Purple Heart Rooted.



PAGE: 29



## Tulip



SIZE: 53 cm | FRONT: 9 cm  
CROWN: 12.5 cm | NAPE: 8 cm



### COLOURS:

Red Chestnut Rooted, Sycamore Melange Rooted, Zebra Wood Rooted, Lotus Silver, Lotus Iced Melange, Lotus Midnight, Cherry Rooted, **Sandalwood Rooted**, Cherry Melange, Maple Melange, Smokey Melange, Walnut Melange, Sandalwood Melange, Oak Melange Rooted, Light Oak Melange Rooted, Ash Rooted **NEW**.

PAGE: 33



COLOUR ▶ STYLE ▼	MELANGE												ROOTED				
	Lotus Midnight	Walnut Melange	Sandalwood Melange	Cherry Melange	Maple Melange	Zebra Wood Rooted	Red Chestnut Rooted	Sycamore Melange Rooted	Sandalwood Rooted	Light Oak Melange Rooted	Oak Melange Rooted	Cherry Rooted	NEW Ash Rooted	NEW Purple Heart Rooted	NEW Birch Long Rooted	NEW Aspen Melange Rooted	NEW Willow Rooted
ASTER	•	•	•	•	•	•	•	•	•	•	•			•	•		
BLOSSOM	•	•	•	•	•	•	•	•	•	•	•	•	•				
BLUEBELL	•	•	•	•	•	•	•	•	•	•	•		•	•			
DAHLIA	•	•	•	•	•	•	•	•	•	•	•				•		
DAISY					•							•	•		•	•	
FUCHSIA		•								•				•	•		
GARDENIA		•											•	•	•		
HAZEL	•	•	•	•	•	•	•	•	•	•	•						
IRIS	•	•	•	•	•	•	•	•	•	•	•						
JASMINE	•	•	•	•	•	•	•	•	•	•	•				•		
LILY	•	•	•	•	•	•	•	•	•	•	•			•	•		
PEONY	•	•	•	•	•	•	•	•	•	•	•						
POPPY	•	•	•	•	•	•	•	•	•	•	•			•	•		
PRIMROSE												•	•		•		
TULIP	•	•	•	•	•	•	•	•	•	•	•	•					

COLOUR ▶ STYLE ▼	GREYS			
	Lotus Silver	Lotus Iced Melange	Smokey Melange	Sugar Berry
ASTER	•	•	•	
BLOSSOM	•	•	•	
BLUEBELL				
DAHLIA	•	•	•	
DAISY	•			
FUCHSIA				•
GARDENIA		•		
HAZEL	•	•	•	
IRIS		•		•
JASMINE	•	•	•	•
LILY	•	•	•	
PEONY	•	•	•	
POPPY				•
PRIMROSE	•			•
TULIP	•	•	•	



# CREATIVE

BY SENTOO



Mono top - hand-tied - lacefront – antislip-section

Our beautiful Creative wigs Octavia, Phebe, Viola and Titania are made of the unique VHair Mix fibre – which are high resistant and designed to be styled or cut, to best enhance the fibre.



## VHAIR MIX

VHair Mix is a unique blend of fibres formulated by Aderans. The main component is VHair, a durable, lightweight and colour-fast fibre. Combined with a heat-resistant flexi fibre, this fibre not only allows for a super natural look but also allows the wearer to heat style for a perfectly flawless finish.

VHair products are only available from stockists upon their successful completion of the Aderans VHair Educational Programme. When purchasing directly from an Aderans salon or website, an in-salon consultation is included in the purchase price to ensure that every wearer knows how best to care for their item. If you are a trade customer of Aderans and wish to register for the Aderans VHair Educational Programme and stock these styles within your venue, please contact us today.

NEW



PAGE: 44

## OCTAVIA



SIZE: 54 cm | FRONT: 8 cm  
CROWN: 8 cm | NAPE: 6 cm

S M L

COLOURS:

Midnight Melange, Walnut Melange, **Smokey Melange**, Iced Melange, Zebra Wood Soft Rooted, Maple Melange Soft Rooted, Oak Melange Soft Rooted, Beechwood Soft Rooted, Honey Maple Soft Rooted, Heartwood Soft Rooted.

NEW



PAGE: 46

## PHEBE



SIZE: 54 cm | FRONT: 9 cm  
CROWN: 17 cm | NAPE: 6 cm

S M L

COLOURS:

Midnight Melange, **Walnut Melange**, Smokey Melange, Iced Melange, Zebra Wood Soft Rooted, Maple Melange Soft Rooted, Oak Melange Soft Rooted, Beechwood Soft Rooted, Honey Maple Soft Rooted, Heartwood Soft Rooted.

NEW



PAGE: 48

## VIOLA



SIZE: 54 cm | FRONT: 14 cm  
CROWN: 32 cm | NAPE: 11.5 cm

S M L

COLOURS:

Midnight Melange, Walnut Melange, Smokey Melange, Iced Melange, Zebra Wood Soft Rooted, Maple Melange Soft Rooted, Oak Melange Soft Rooted, Beechwood Soft Rooted, Honey Maple Soft Rooted, **Heartwood Soft Rooted**.

NEW



PAGE: 50

## TITANIA



SIZE: 54 cm | FRONT: 18 cm  
CROWN: 45 cm | NAPE: 34 cm

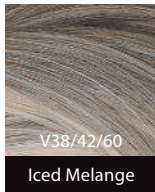
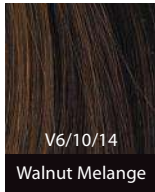
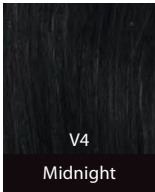
S M L

COLOURS:

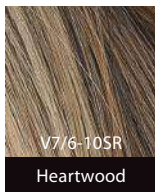
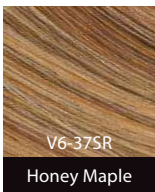
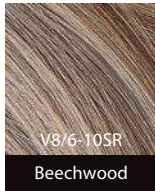
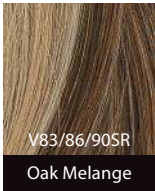
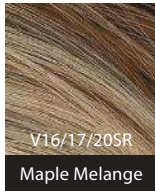
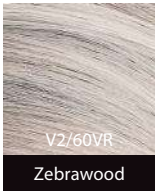
**Midnight Melange**, Walnut Melange, Smokey Melange, Iced Melange, Zebra Wood Soft Rooted, Maple Melange Soft Rooted, Oak Melange Soft Rooted, Beechwood Soft Rooted, Honey Maple Soft Rooted, Heartwood Soft Rooted.



CREATIVE COLOURS



SOFT ROOTED



**Please note:** For a true representation of colour, we recommend using a collection colour ring. Order now.

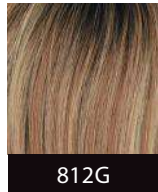
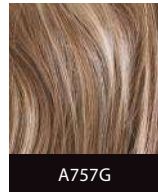
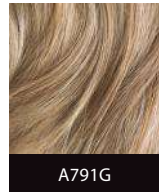
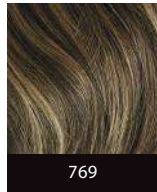
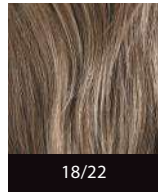
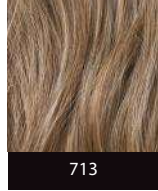
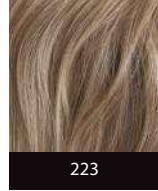
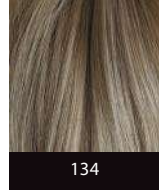
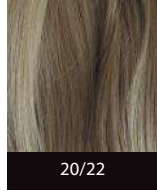
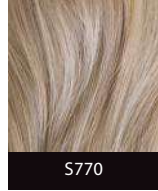


CREATIVE | PHEBE

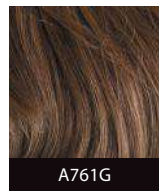
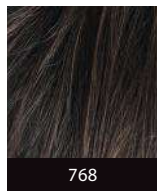
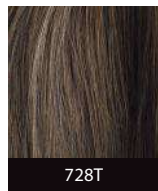
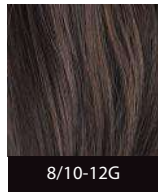
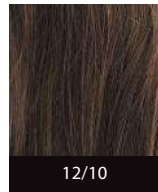
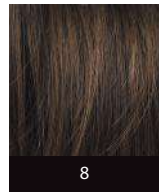
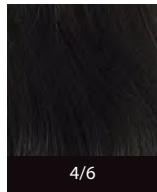
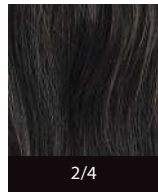
# PREMIUM

BY SENTOO

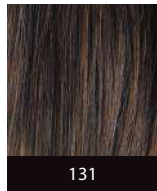
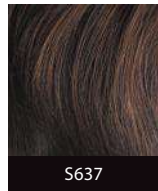
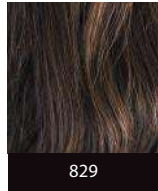
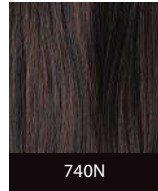
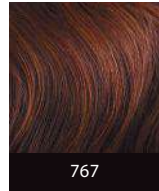
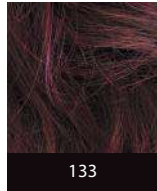
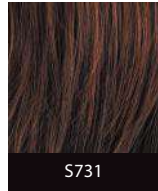
## BLONDES



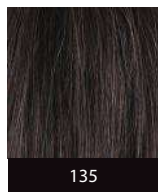
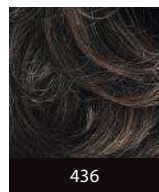
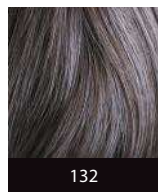
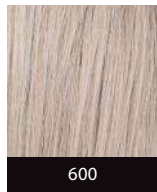
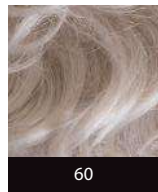
## BROWNS



## REDS


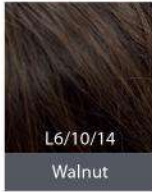
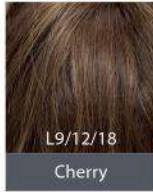
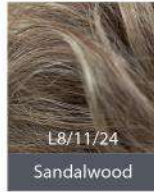
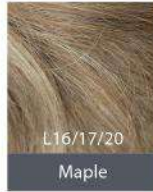
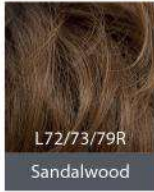
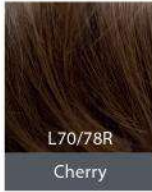

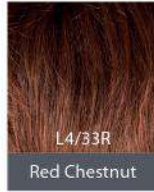


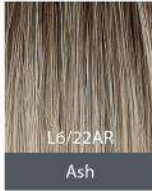

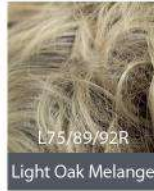
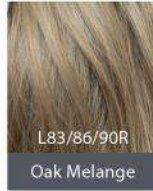


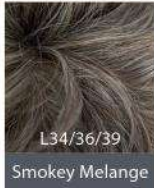
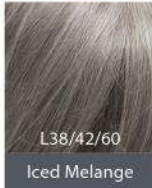

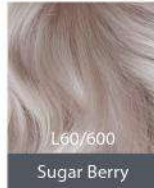


## GREYS



# LOTUS – COLOURS

**LOTUS**  
BY SENTOO

MELANGE	 <p>L4 Midnight</p>	 <p>L6/10/14 Walnut</p>	 <p>L9/12/18 Cherry</p>	 <p>L8/11/24 Sandalwood</p>	 <p>L16/17/20 Maple</p>
ROOTED	 <p>L72/73/79R Sandalwood</p>	 <p>L70/78R Cherry</p>	 <p>L6/70/23RT Sycamore Melange</p>	 <p>L4/33R Red Chestnut</p>	 <p>L4/74R Purple Heart</p>
	 <p>L12/14R Birch Long</p>	 <p>L6/22AR Ash</p>	 <p>L8/22R Aspen Melange</p>	 <p>L75/89/92R Light Oak Melange</p>	 <p>L83/86/90R Oak Melange</p>
	 <p>L6/20R Willow</p>	 <p>L2/60V/R Zebra wood</p>			
GREYS	 <p>L34/36/39 Smokey Melange</p>	 <p>L38/42/60 Iced Melange</p>	 <p>L62 Silver</p>	 <p>L60/600 Sugar Berry</p>	

Please note: For a true representation of colour, we recommend using a collection colour ring. Order now.

# SENTOO COLLECTION

DISCOVER THE SENTOO COLLECTION FURTHER

TRENDCO.CO.UK



## Aderans

### Head Office & Mail Order

Sheridan House  
114-116 Western Road  
Hove  
BN3 1DD  
T: 01273 774977/ 777503  
E: info@trendco.co.uk

### Trendco Birmingham

13 Canon Street  
Birmingham  
B2 5EN  
T: 0121 633 4280  
E: birmingham@trendco.co.uk

### Trendco Hove

Sheridan House  
114-116 Western Road  
Hove  
BN3 1DD  
T: 01273 778516  
E: hove@trendco.co.uk

### Trendco Liverpool (Wiggins)

119 Penny Lane  
Liverpool  
L18 1DF  
T: 0151 733 5826  
E: liverpool@trendco.co.uk

### Trendco London

64 Westbourne Grove  
London  
W2 5SH  
T: 0207 221 2646  
E: london@trendco.co.uk

### Trendco Manchester

3rd Floor, Lloyds House  
18 Lloyd Street  
Manchester  
M2 5WA  
T: 0161 834 6151  
E: manchester@trendco.co.uk

### Trendco Nottingham

Suite 1A, The Hub  
40 Friar Lane  
Nottingham  
NG1 6DQ  
T: 0115 947 5316  
E: nottingham@trendco.co.uk

### Trendco Scotland (A&A Studios)

8-10 Tanfield  
Inverleith  
Edinburgh  
EH3 5HF  
T: 0131 556 7057  
E: edinburgh@trendco.co.uk