

A woman with vibrant purple hair and a black top stands in front of a graffiti wall. She is wearing a black tank top and a black skirt. She has purple hair with bangs, gold hoop earrings, and a gold chain necklace. The background is a colorful graffiti wall with various tags and designs.

RENÉ OF PARIS™

MUSE SERIES

2021 - 2022



# AVAILABLE COLORS



DUSTY ROSE



SMOKY FOREST



FROZEN SAPPHIRE



LUNAR HAZE



MIDNIGHT STONE



GRAPE BURST



ICY PETAL



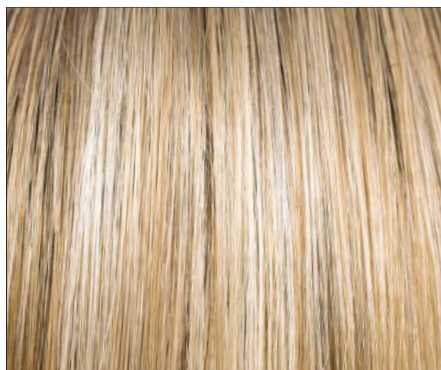
LILAC CLOUD



POLAR SKY



COSMIC TEAL



CREAMY TOFFEE



MARBLE BROWN



NEW

COLOR SHOWN:  
Marble Brown (Top)  
Lilac Cloud (Bottom)

Cap: Lace Front / Lace Part /  
Soft Net Back

Fringe: 4.5" (11.4 cm)

Crown: 14.5" (36.8 cm)

Nape: 6.5" (16.5 cm)

Weight: 4.47 oz (127 g)

HIGH HEAT

AVAILABLE COLORS:

Creamy Toffee

Grape Burst **NEW**

Lilac Cloud

Marble Brown

Midnight Stone

Polar Sky



MOD 1504  
SLEEK



NEW

COLOR SHOWN:  
Lilac Cloud (Top)  
Midnight Stone (Bottom)

Cap: Lace Front / Lace Part /  
Soft Net Back  
Fringe: 9"-11" (22.8 - 27.9 cm)  
Crown: 8"- 9" (20.3 - 22.8 cm)  
Nape: 2" (5.08 cm)  
Weight: 3.75 oz (106.5 g)

HIGH HEAT

AVAILABLE COLORS:  
Creamy Toffee  
Grape Burst **NEW**  
Lilac Cloud  
Marble Brown  
Midnight Stone  
Polar Sky



CHIC<sub>1505</sub>  
WAVEZ





NEW

COLOR SHOWN:

Grape Burst (Top) **NEW**

Polar Sky (Bottom)

Cap: Lace Front / Lace Part /  
Soft Net Back

Fringe: 4.5" (11.4 cm)

Crown: 16" (40.6 cm)

Nape: 11" (27.9 cm)

Weight: 6.45 oz (183 g)

HIGH HEAT

AVAILABLE COLORS:

Creamy Toffee

Grape Burst **NEW**

Lilac Cloud

Marble Brown

Midnight Stone

Polar Sky



LUSH<sup>1506</sup>  
WAVEZ



NEW

COLOR SHOWN:

Icy Petal (Top) **NEW**

Lunar Haze (Bottom)

Cap: Machine Made /  
Soft Net Back

Fringe: 6" (15.2 cm)

Crown: 10" (25.4 cm)

Nape: 4.5" (11.4 cm)

Weight: 4.12 oz (117 g)

HIGH HEAT

AVAILABLE COLORS:

Creamy Toffee

Cosmic Teal

Dusty Rose

Icy Petal

Lunar Haze

Marble Brown

Midnight Stone

Smoky Forest

Frozen Sapphire



STILKY  
SLEEK 1507



# LAVISH WAVEZ 1500

Cap: Lacefront / Lacepart  
 Fringe: 15.5" (39.37 cm)  
 Crown: 19" (48.26 cm)  
 Nape: 17.5" (44.45 cm)  
 Weight: 5.81 oz (164.71 g)

**HIGH HEAT**  
 AVAILABLE COLORS:  
 Creamy Toffee  
 Cosmic Teal  
 Dusty Rose  
 Frozen Sapphire  
 Lunar Haze  
 Marble Brown  
 Smoky Forest

# BREEZY WAVEZ 1501

COLOR SHOWN:  
 Cosmic Teal

Cap: Machine Made  
 Fringe: 4" (10.16 cm)  
 Crown: 9" (22.86 cm)  
 Nape: 6.5" (16.51 cm)  
 Weight: 4.05 oz (114.81 g)

**HIGH HEAT**  
 AVAILABLE COLORS:  
 Cosmic Teal  
 Creamy Toffee  
 Dusty Rose  
 Frozen Sapphire  
 Lunar Haze  
 Marble Brown  
 Smoky Forest

# VELVET WAVEZ 1502

Cap: Lacefront / Lacepart /  
 Soft Net Back  
 Fringe: 13" (33.02 cm)  
 Crown: 13" (33.02 cm)  
 Nape: 5" (12.7 cm)  
 Weight: 5.69 oz (161.5 g)

**HIGH HEAT**  
 AVAILABLE COLORS:  
 Creamy Toffee COMING SOON  
 Lilac Cloud  
 Marble Brown COMING SOON  
 Midnight Stone  
 Polar Sky

# DIVINE WAVEZ 1503

COLOR SHOWN:  
 Lilac Cloud

Cap: Lacefront / Lacepart /  
 Soft Net Back  
 Fringe: 12" (30.4 cm)  
 Crown: 18" (45.7 cm)  
 Nape: 14" (35.5 cm)  
 Weight: 6.4 oz (181.4 g)

**HIGH HEAT**  
 AVAILABLE COLORS:  
 Creamy Toffee COMING SOON  
 Lilac Cloud  
 Marble Brown COMING SOON  
 Midnight Stone  
 Polar Sky





2021-2022 MUSE SERIES BY RENÉ OF PARIS™

Heat Friendly Fiber

Distributed by Aderans Hair Goods

9135 Independence Avenue Chatsworth, CA 91311 USA

Toll Free: 800.353.7363 Fax: 818.885.0134

FRONT COVER: MOD SLEEK IN GRAPE BURST

BACK COVER: SILKY SLEEK IN DUSTY ROSE

[www.reneofparis.com](http://www.reneofparis.com)

FOLLOW US ON:



SCAN • WATCH • LEARN

ROP MUSE SERIES 2021-2022



2110930